



NEWMIND  
47 W. Polk St. STE 100-241  
Chicago, IL 60605

newmind@newmind.com  
www.newmind.com

## CERTIFICATE OF ANALYSIS

### Phenylpiracetam

(4-Phenyl-2-pyrrolidone-1-acetamide)

Material Lot #: 20150409      Manufacture Date: 04/09/2015  
Country of Origin: China      Expiration Date: 04/11/2018

Analysis	Claim	Result
Phenylpiracetam	≥99.5%	99.75%

Test	Specification	Result
Appearance	White Powder	Complies
Residue on ignition	≤0.2%	0.15 %
Loss on drying	≤0.5%	0.35%
Heavy Metals (µg/g)	≤10 ppm	Complies

Phenylpiracetam should be stored at or below room temperature in a tightly sealed durable container.  
Phenylpiracetam should be protected from excess heat, direct sunlight, excess humidity and moisture.  
Phenylpiracetam has a stable shelf life of 3 years from the date of manufacture when properly stored.



NEWMIND  
47 W. Polk St. STE 100-241  
Chicago, IL 60605

newmind@newmind.com  
www.newmind.com

## CERTIFICATE OF ANALYSIS

### Phenylpiracetam

(4-Phenyl-2-pyrrolidone-1-acetamide)

Laboratory Number: 5396

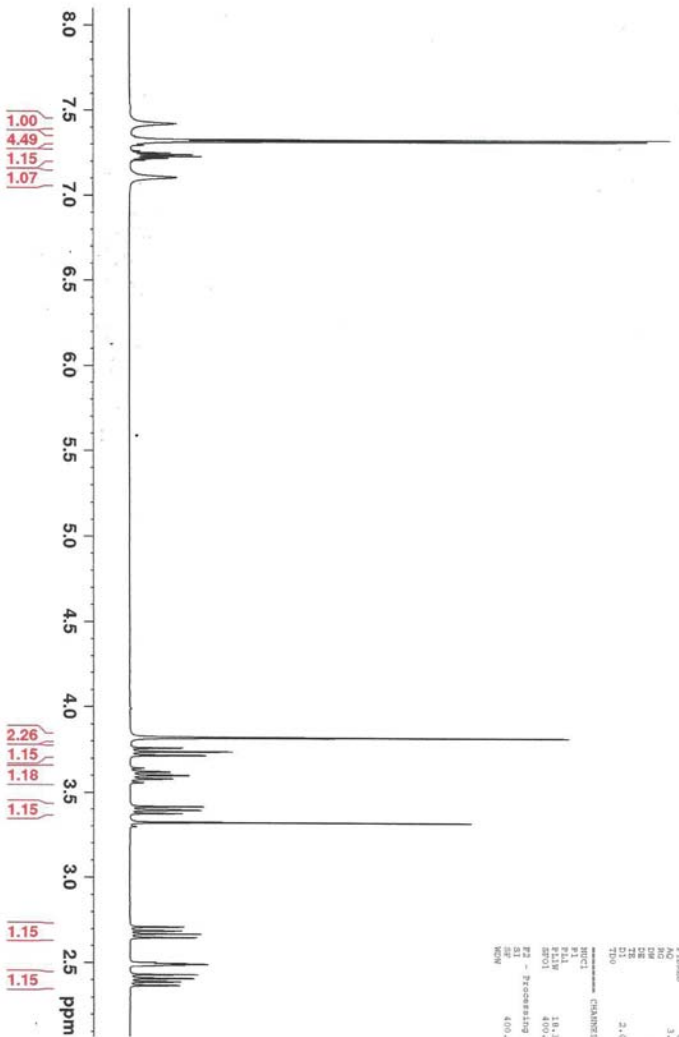
Product Name	Phenylpiracetam	Client Lot Number	SMPN20150409
Report Date	06/29/15	Order #	SNT_0061

Test	Result
Proton NMR	Conforms to structure
HPLC Assay	100.2%
Heavy Metals (ICP-MS)	ppm
Arsenic	<0.001
Cadmium	<0.001
Lead	0.044
Mercury	0.007

Collin Thomas *Collin Thomas*  
Laboratory Manager

06/29/2015 *6/29/15*  
Date

**<sup>1</sup>H NMR of phenylacetamide in DMSO**  
 Lot # S396  
 400 MHz  
 Colmaric Analytical  
 06-24-15



```

Current Data Parameters
=====
NAME      06-24-15-01
PROCNO    1
F2 - Acquisition Parameters
-----
Date_      06-24-15
Time       21:28
PROBHD     5 mm BBO-1H
PULPROG    zgpg30
NUC1       13C
SOLVENT    DMSO
DS         2
SS         2
SHIMMERS   3238.232 Hz
Acq       3.1457282 sec
RG         36.000 used
DS         2
SFO        400.1300000 MHz
AQ         2.0000000 sec
FID
=====
Channel f1 Parameters
-----
NUC1       13C
P1         11.18 used
PL1        0 dB
PL12       18.5000000 dB
PL13       18.5000000 dB
PL14       18.5000000 dB
PL15       18.5000000 dB
PL16       18.5000000 dB
PL17       18.5000000 dB
PL18       18.5000000 dB
PL19       18.5000000 dB
PL20       18.5000000 dB
PL21       18.5000000 dB
PL22       18.5000000 dB
PL23       18.5000000 dB
PL24       18.5000000 dB
PL25       18.5000000 dB
PL26       18.5000000 dB
PL27       18.5000000 dB
PL28       18.5000000 dB
PL29       18.5000000 dB
PL30       18.5000000 dB
PL31       18.5000000 dB
PL32       18.5000000 dB
PL33       18.5000000 dB
PL34       18.5000000 dB
PL35       18.5000000 dB
PL36       18.5000000 dB
PL37       18.5000000 dB
PL38       18.5000000 dB
PL39       18.5000000 dB
PL40       18.5000000 dB
PL41       18.5000000 dB
PL42       18.5000000 dB
PL43       18.5000000 dB
PL44       18.5000000 dB
PL45       18.5000000 dB
PL46       18.5000000 dB
PL47       18.5000000 dB
PL48       18.5000000 dB
PL49       18.5000000 dB
PL50       18.5000000 dB
=====
F2 - Processing parameters
-----
SI         32768
SF         400.1300000 MHz
WDW        EM
SSB        0
LB         3.0000000 MHz
GB         0
PC         10.0000000
MC         1
DC         0
RE         1
SC         1
TC         1
MC         1
=====
  
```